

KIRVANI

Textile Art
by
Katja Wentz

KIRVANI

Textile Art
by
Katja Wentz



KTA ref.nr: WH-0204
(165 x 165 cm)

KIRVANI

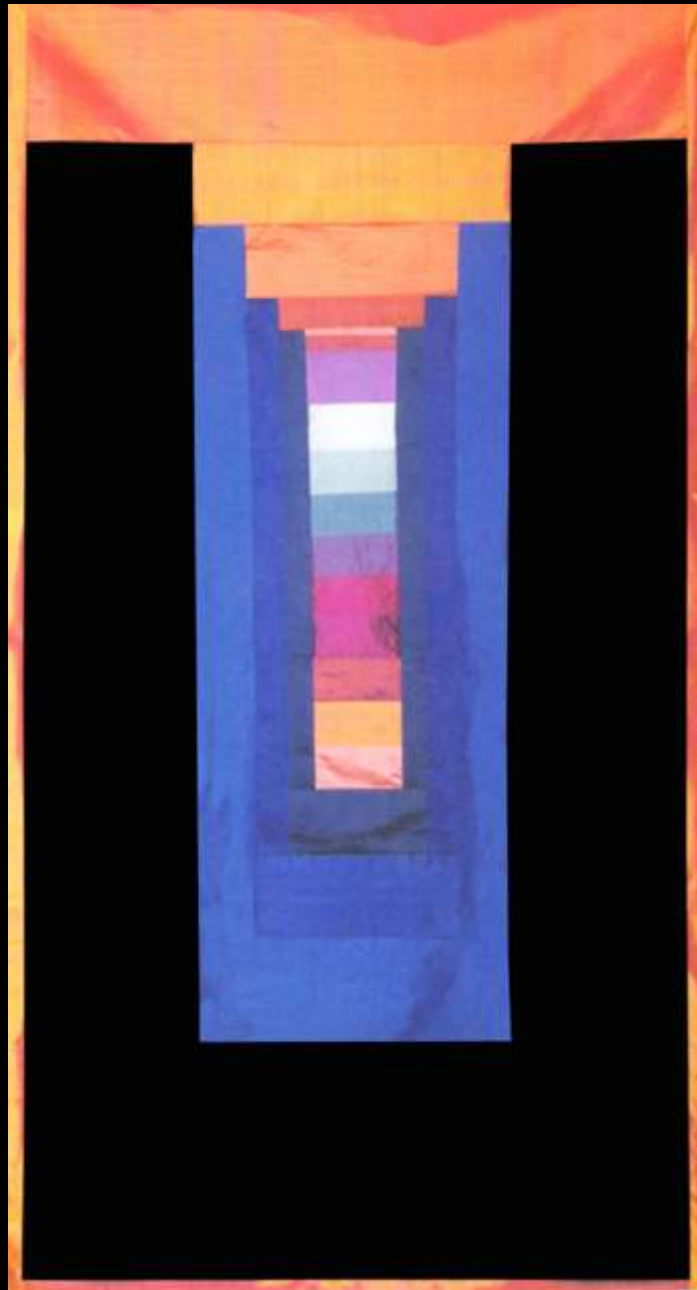
Textile Art
by
Katja Wentz



KTA ref.nr: WH-0284

KIRVANI

Textile Art
by
Katja Wentz



KTA ref.nr: WH-0319

KIRVANI
Textile Art
by
Katja Wentz



KTA ref.nr: WH-0503



KIRVANI

Textile Art
by
Katja Wentz

KTA ref.nr: WH-0511



KIRVANI

Textile Art
by
Katja Wentz

KTA ref.nr: WH-0513
(125 x 140 cm)

KIRVANI

Textile Art
by
Katja Wentz



KTA ref.nr: WH-0532
(150 x 170 cm)

KIRVANI

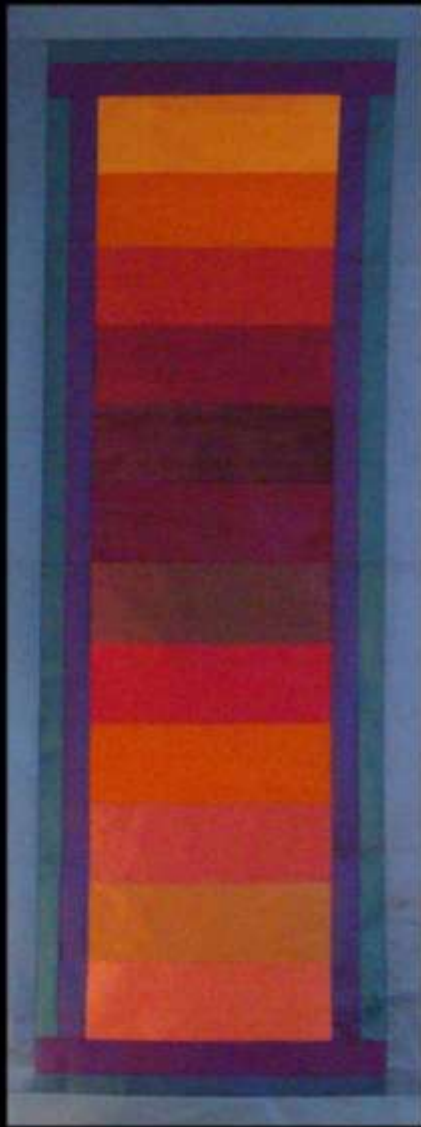
Textile Art
by
Katja Wentz



KTA ref.nr: WH-0432
(135 x 185 cm)

KIRVANI

Textile Art
by
Katja Wentz



KTA ref.nrs: WH-0472/WH-0477/WH-0491

KIRVANI

Textile Art
by
Katja Wentz



KTA ref.nr: WH-0323

KIRVANI

Textile Art
by
Katja Wentz



KTA ref.nr: WH-0324

KIRVANI

Textile Art
by
Katja Wentz



KTA ref.nr: WH-0326

KIRVANI

Textile Art
by
Katja Wentz



KTA ref.nr: WH-0428

KIRVANI

Textile Art
by
Katja Wentz



KTA ref.nrs: TR-0813 / TR-0817 / TR-0818 / TR-0822 / TR-0824 / -TR0827

KIRVANI

Textile Art
by
Katja Wentz



KTA ref.nrs: TR-0828 / TR-0829 / TR-0834 / TR-0836 / TR-0838 / TR-0842

KIRVANI

Textile Art
by
Katja Wentz



KIRVANI

Textile Art
by
Katja Wentz



Expo 2007, Goethe Institut, Kuala Lumpur Malaysia

KIRVANI

Textile Art
by
Katja Wentz



Expo 2007, Goethe Institut, Kuala Lumpur Malaysia

KIRVANI

Textile Art
by
Katja Wentz

Artist info

Katja Wentz

(Düsseldorf Germany, 1966)

Profession:

Textile artist, Painter, Musician (sitar)

Studies:

Hochschule der Künste, Berlin

Exhibitions:

Europe

Germany (Berlin, Düsseldorf, Dortmund, Hanover)

France (Toulouse, Biarritz, Sarlat, Cordes-s-Ciel)

Sweden (Göteborg)

Spain (Ibiza)

Asia

Singapore

Malaysia (Kuala Lumpur)

KIRVANI

Textile Art
by
Katja Wentz

Artist info

Katja Wentz

Moves as an artist and a printer between east and west.

She creates wall hangings assembled of silk fabrics, which she collects between
India, Nepal, Laos, Thailand and Indonesia.

Katja also conducted social arts projects in Nepal and South India with leprosy patients,
Tamil women and street kids from the lower cast in which mandalas have played a
therapeutic role.

(A mandala is a concentric diagram with a spiritual and ritual significance in both the Buddhist and the Hindu tradition.)

KIRVANI

Textile Art
by
Katja Wentz

Contact

www.kirvani.com

katjawentz@hotmail.com